



AIR DRYING AND BLOW-OFF SOLUTION



Save Energy



Improve Quality

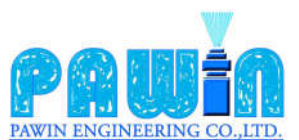


Increase Capacity



Reduce Noise

PERFORMANCE GUARANTEE



www.pawin.co.th



Blower Air System

Using blower air systems for drying and blow-off applications yields many advantages, including:

ประหยัดพลังงาน: ประหยัด
พลังงานได้ถึง 80%

เพิ่มคุณภาพ: เป่าได้ทั่วถึงและแห้งสนิท ลม
ร้อนที่ออกมาสะอาด, ไม่มีน้ำมัน

เพิ่มผลผลิต: เพิ่มความเร็ว
ในการเป่าแห้งและเป่าผง



ปลอดภัยต่อสภาพแวดล้อม: เสียงเบา
และใช้ความคั้นน้อย ปลอดภัยต่อผู้ใช้งาน

บำรุงรักษาง่าย

ทนทาน: สามารถทำงานได้ต่อเนื่อง

Regenerative Blower

Air delivery up to 2395 m³/h – Pressure up to 750 mbar

FEATURES

- Low maintenance, direct drive operation
- Rugged cast aluminum construction and long life time
- Continuous, non-pulsating, oil-free and heated air
- Low noise
- Lightweight
- Tropicalized for corrosion protection
- IE2 and TEFC motors; CE and cURus certified



| Specification – 50 Hz (2900 rpm) | | | | | | | | |
|----------------------------------|---------------------|---------------------|---------------------|---------------------|-----------|-----------|-------------|-----------|
| MODEL | 50760-2.2L | 50760-3L | 50760-5.5L | 50760-7.5L | 50760-11L | 50760-15L | 50760-18.5L | 50760-22L |
| kW/ HP | 2.2/2.95 | 3/4 | 5.5/7.4 | 7.5/10 | 11/14.7 | 15/20.1 | 18.5/24.8 | 22/29.5 |
| Volt (Δ)/ Volt (Y) | 200-240/ 345-415 | 200-240/ 345-415 | 345-415/ 600-720 | 345-415/ 600-720 | 400/ 690 | 400/ 690 | 400/ 690 | 400/ 690 |
| Max Flow (m ³ /h) | 320 | 320 | 520 | 700 | 782 | 915 | 1325 | 1764 |
| Max Pressure (mbar) | 200 | 275 | 300 | 275 | 350 | 400 | 360 | 275 |
| Noise (dB) | 69 | 69 | 70 | 70 | 78 | 79 | 85 | 88 |
| Weight (kg) | 29 | 34 | 63 | 69 | 125 | 147 | 158 | 187 |

Regenerative Blower

Air Knife

Air Nozzle

Accessories

Air Knife

For proper drying and blow-off, the air knives must deliver strong air stream integrity. Our WindJet air knives feature three main characteristics which result in uncompelling performance; namely, Coanda effect, unique leading edge and its teardrop shape. The benefit is clear – a uniform, high-volume and constant air stream along the entire knife length ensures no spotting or blotching which means a higher quality and consistent blowing/ drying process.



Coanda Effect + Teardrop Shape + Leading Edge

- Uniform, high volume and constant air stream
- Consistent air flow throughout the length
- Eliminate the spotting and blotching problem
- Increase total air volume



50750: Aluminum Air Knife



FEATURES

- Aluminum. Corrosion-resistant finish
- Use air knife with integrated adjustable nozzles to simultaneously direct air onto flat surface and hard-to-reach area

50700: Stainless Steel Air Knife



FEATURES

- 316 Stainless Steel. Corrosion-resistant

Air Knife – Model Chart

| Example | 50750 | -24 | -040 | -2L | 50750-12-040-2L |
|-----------|----------------|-----|------|---------|---|
| Model | 50750 50700 | | | | Aluminum Air Knife Stainless Steel Air Knife |
| Length | | XXX | | | 6" to 165" |
| Slot Size | | | XXX | | 0.040" or 0.060" |
| Option | | | | XL - | Number of adjustable nozzles (1-4) None |

Air Nozzle

55155: Air Cannon



FEATURES

- For drying holes in irregularly shaped parts and seams
- Concentrate large volume of air flow and deliver a high velocity air stream

32254: Blower Nozzle



FEATURES

- High impact, high flow velocity and low pressure
- Available in headers

YBLW: WindJet® Blower Air Nozzle



FEATURES

- High impact, high flow velocity and low pressure
- Available in headers

Air Cannon – Model Chart

| Example | 55155 | -750 | -AL | 55155-750-AL |
|-----------|-------|------|----------|---------------------------------|
| Model | 55155 | | | Air Cannon |
| Slot Size | | XXX | | 500 or 750 or 1000 mm |
| Material | | | AL SS | Aluminum 316 Stainless Steel |

Blower Nozzle – Model Chart

| Example | 32254 | -1.0 | -304SS | 32254-1.0-304SS |
|-----------|-------|------|--------|---------------------|
| Model | 32254 | | | Blower Nozzle |
| Slot Size | | XXX | | 1.0 or 1.5 mm |
| Material | | | 304SS | 304 Stainless Steel |

WindJet® Blower Air Nozzle – Model Chart

| Model | Description |
|--------------|---|
| YBLW-B1/2-SS | WindJet Blower Air Nozzle 304 Stainless Steel |

Regenerative Blower

Air Knife

Air Nozzle

Accessories

Blower Assembly Accessories

AIF: Air Inlet Filter

FEATURES

- Prevent particles from entering the blower
- Ensure trouble-free operation
- Filtration: Paper (standard), Polyester and HEPA filter for extreme filtration



PRV: Pressure Relief Valve

FEATURES

- Protect pressurized equipment from overtaking of an admitted pressure limit
- Emergency discharge of pressurized fluids when a set pressure is reached



PG: Filter Monitoring Gauge

FEATURES

- Monitor outlet pressure



MF: Mounting Flange

FEATURES

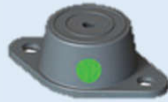
- Incorporate pressure gauge and pressure relief valve inline with out-going tubing
- Size: 2.5", 3", 4"



BS: Vibration Mounting Bracket

FEATURES

- Isolate vibration to structure and environment



SCBRPKT: Repair Kit

FEATURES

- Repair kit for blowers

Package Accessories

50771: Manifold

FEATURES

- Stainless steel or plastic
- Y-divider, 3-port, 4-port, 5-port and 6-port



MB: Mounting Bracket

FEATURES

- Stainless steel
- Adjustable brackets for mounting air knives and air cannons



5408: Coupling

FEATURES

- Use between any rigid connections to prevent air leakage and add support for connection
- Size: 2.5", 3", 4", 6"



50779: Elbow

FEATURES

- Reduce pressure losses in the system



Flexible/ Rigid Tubing

FEATURES

- Flexible tubing and stainless steel rigid tubing
- Worm-gear clamps for attachment



Enclosure

FEATURES

- Insulator
- Noise reduction by 10 dBa



Regenerative Blower

Air Knife

Air Nozzle

Accessories



Compressed Air System

Air Nozzle

FEATURES

- Generate efficient and controlled air pattern for a uniform spray distribution
- Produce low noise levels
- Material: ABS plastic, Polyphenylene sulfide, Aluminum, Stainless Steel
- Inlet Connection: 1/8" - 3/8" M or F



| AA727 – Flat Fan | AA707 – Round Spray | UniJet Nozzle | Y767 – Compact |
|------------------|---------------------|---------------|----------------|
| | | | |

Air Knife

57070: WindJet® Low Flow Air Knife

FEATURES

- Uniform air flow across the entire length of air knife
- High velocity air stream
- Reduce energy use
- Maintenance-free; no moving parts
- Lower noise levels, 69 dBA for most applications
- Easy to install and maintain
- Compact and designed for small areas
- 316SS available for sanitary applications
- Available shim sets - 0.03, 0.05, 0.08, 0.10 mm to adjust air force and flow.

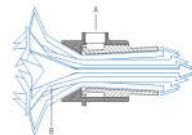


Air Amplifier

57080: WindJet® Variable Air Amplifier

FEATURES

- Ideal for spot drying, blow-off and exhaust
- Deliver a targeted high volume, high velocity amplified air stream
- Save on air consumption (up to 90%)
- Maintenance-free; no moving parts
- Low noise levels – meets OSHA pressure and noise requirements



| WindJet® Low Flow Air Knife – Model Chart | | | | |
|---|-------|----|-------------|---------------------------------|
| Type | 57070 | -3 | -AL | 57070-3-AL |
| Model | 57070 | | | Low Flow Air Knife |
| Length | | 3 | | 3, 6, 12, 18 or 24 |
| Material | | | AL 316SS | Aluminum 316 Stainless steel |

Standard shim of 0.05 mm thick is installed

| WindJet® Variable Air Amplifier – Model Chart | | | |
|---|--------|-----------------|---------------|
| Model | Inlet | Air Consumption | Amplify Ratio |
| 57080-075 | 1/8NPT | 263 Nlpm | 10 |
| 57080-125 | 1/4NPT | 370 Nlpm | 16 |
| 57080-200 | 3/8NPT | 606 Nlpm | 20 |
| 57080-400 | 1/2NPT | 1424 Nlpm | 24 |

Air Nozzle

Air Knife

Air Amplifier

Accessories

Accessories

Compressed Air Flowmeter

FEATURES

- Measure mass flow by thermal dispersion
- Install within minutes
- Built-in LED display
- Size: 1/2" to 8"
- Pulse/ current outputs
- CE certified and RoHS compliant



Digital Sound Meter

FEATURES

- Measure noise levels from 30 to 130 dB
- Accuracy: ±1.5 dB
- Hold data, records max or min, auto ranging, auto power-off and dynamic range of 50 dB



2-Way Solenoid Valve

FEATURES

- Designed for automatically operated systems requiring on/off flow
- Air temperature up to 82°C
- Class F coils for continuous duty
- UL, CSA and CE approved



Filters and Regulators

FEATURES

- Aluminum and polycarbonate construction
- Manual, semi-auto or autodrain available
- Non-rising adjustment knob with push-pull lock ring feature
- Pressure gauge is available



Compressed Air Fitting & Hose

FEATURES

- Hex Nipple
- Close Nipple
- Coupler
- Reducer
- Tee
- Elbow
- Cross
- Bulkhead Fitting
- Quick Connect Pneumatic Fittings



Air Nozzle

Air Knife

Air Amplifier

Accessories

Stay-n-Place Hoses and Magnetic Mounting Bases

FEATURES

- Easy-to-use, flexible source of targeted air that is changeable
- Once the hose is in place, it will not move or relax its position
- The magnetic base, with built-in valves, can be mounted vertically or horizontally
- Bendable hoses won't move once in place



36275: Adjustable Ball Fitting

FEATURES

- Adjustable positioning of nozzle for more exact control of spray direction
- Enable easy removal and cleaning of nozzles
- Maximum pressure rating: 21 bar



RCh: Pressure Gauge

FEATURES

- Monitor inline pressure
- Dial Size: 2.5", 4"
- Pressure Range: 0-4 bar, 0-6 bar and 0-10 bar
- Center back, Bottom 1/4" or 1/2" connection



Compressed Air Hose

FEATURES

- Reinforced synthetic rubber to assure long life



Manual Valve

FEATURES

- High quality stainless steel ball valve



Muffler

FEATURES

- Help to reduce noise



Drying and Blow-off Solution

The number and length of air knives, nozzles, blower size and necessary accessories vary depending on your application. We offer drying and blow-off solution designed specifically for your applications.

Benefits of choosing PVN Drying and Blow-off Solution

- **Performance guarantee**
We guarantee drying and blow-off performance according to your requirements
- **Long and various experience to meet your exact needs**
Expertise in blower air solutions; whatever your applications are, we have the optimal solution for you
- **Just for you solution**
Our solution is tailor-made for your application with your objectives in mind. Whatever your challenges are, we design our systems to solve them for you.
- **1-Year on-site service**
We provide an on-site service during the first year of operation



Reference List:



Molding Blow-off



Milk Bottle Drying



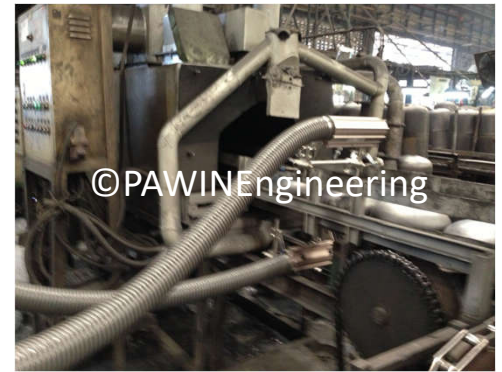
Battery Washing and Drying Machine



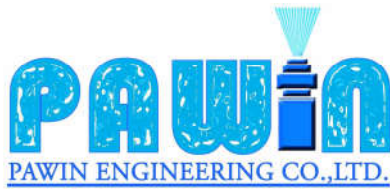
Soft Drink Bottle Blow-off



Metal Tube Drying



Gas Cylinder Drying



www.pawin.co.th

Let Us Help Optimize Your Air Drying and Blow-off Operations

Applications

Drying • Blow-off • Cooling • Conveying • Separating • Cleaning • Removal



BANGKOK OFFICE

PAWIN Engineering Co.,Ltd.

168 Axiom 1 Tower Moo 7
Kingkaew road, Bang Phli Yai,
Bang Phli, Samutprakarn
10540 Thailand
Tel.: +66 2911 4761-5
Fax: +66 2911 4760
Email: pawin@pawin.co.th
Web: www.pawin.co.th

MAPTAPHUT OFFICE

Rayong Sales Office

267/72 Sukhumvit Road
Map Ta Phut New Town
Muang, Rayong
Thailand 21150
Tel.: +66 3860 8678
Fax: +66 3860 8679



follow us on:



@PAWINEngineering